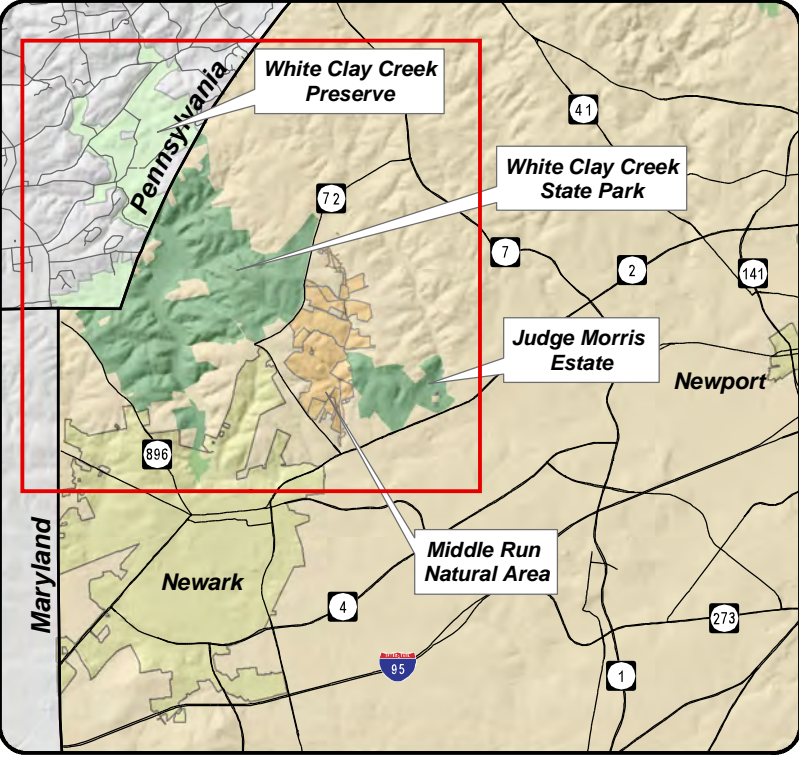


# White Clay Creek Watershed Trails

## Location Map



## Legend

- | Base Information                         | Facilities                 |
|--|----------------------------|
| White Clay Creek State Park (Delaware)   | Park Office/ Nature Center |
| White Clay Creek Preserve (Pennsylvania) | Parking                    |
| Building                                 | Information                |
| Restricted                               | Restrooms                  |
| County/City Parks                        | Picnic Pavilion            |
| City of Newark                           | Picnic Tables              |
| Dam                                      | Playground                 |
| Roads                                    | Bandstand                  |
| ArcCorner Monument                       | Trail Head                 |
| Mason-Dixon Historic Site                | Disc Golf                  |

## Contact Information

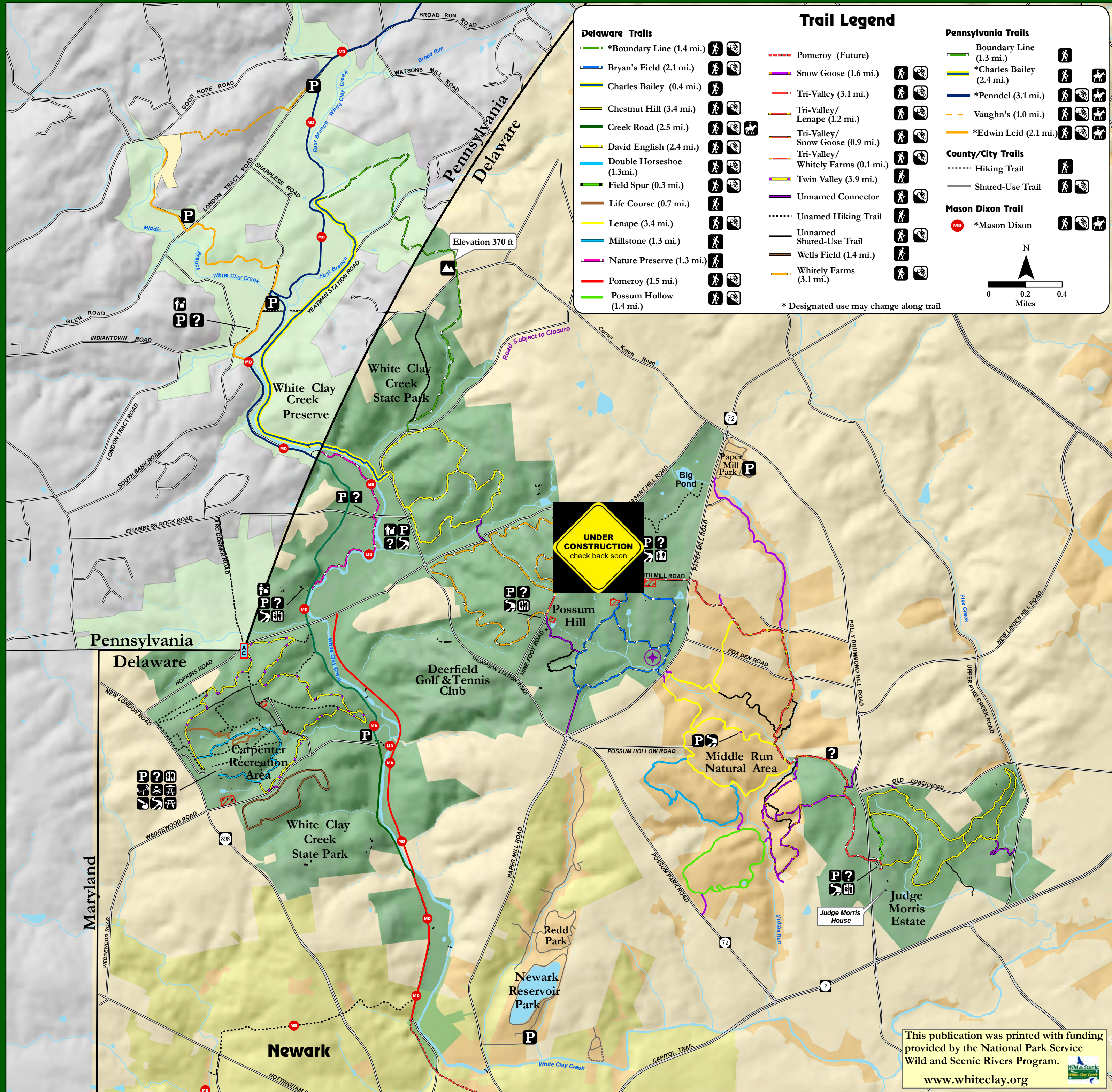
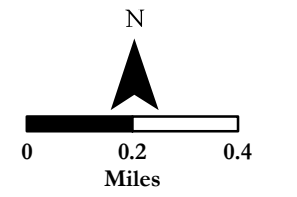
DE Park Office: (302) 368-6900  
 DE Nature Center: (302) 368-6560  
[www.destateparks.com](http://www.destateparks.com)

PA Park Office: (610) 274-2900  
 PA Nature Center: (610) 274-2471  
[www.dcnr.state.pa.us/stateparks](http://www.dcnr.state.pa.us/stateparks)



## Trail Legend

- | Delaware Trails                    | Pennsylvania Trails       |
|------------------------------------|---------------------------|
| *Boundary Line (1.4 mi.)           | Boundary Line (1.3 mi.)   |
| Bryan's Field (2.1 mi.)            | *Charles Bailey (2.4 mi.) |
| Charles Bailey (0.4 mi.)           | *Penndel (3.1 mi.)        |
| Chestnut Hill (3.4 mi.)            | Vaughn's (1.0 mi.)        |
| Creek Road (2.5 mi.)               | *Edwin Leid (2.1 mi.)     |
| David English (2.4 mi.)            | <b>County/City Trails</b> |
| Double Horseshoe (1.3mi.)          | Hiking Trail              |
| Field Spur (0.3 mi.)               | Shared-Use Trail          |
| Life Course (0.7 mi.)              | <b>Mason Dixon Trail</b>  |
| Lenape (3.4 mi.)                   | *Mason Dixon              |
| Millstone (1.3 mi.)                |                           |
| Nature Preserve (1.3 mi.)          |                           |
| Pomeroy (1.5 mi.)                  |                           |
| Possum Hollow (1.4 mi.)            |                           |
| Pomeroy (Future)                   |                           |
| Snow Goose (1.6 mi.)               |                           |
| Tri-Valley (3.1 mi.)               |                           |
| Tri-Valley/Lenape (1.2 mi.)        |                           |
| Tri-Valley/Snow Goose (0.9 mi.)    |                           |
| Tri-Valley/Whitely Farms (0.1 mi.) |                           |
| Twin Valley (3.9 mi.)              |                           |
| Unnamed Connector                  |                           |
| Unnamed Hiking Trail               |                           |
| Unnamed Shared-Use Trail           |                           |
| Wells Field (1.4 mi.)              |                           |
| Whitely Farms (3.1 mi.)            |                           |
- \* Designated use may change along trail



This publication was printed with funding provided by the National Park Service Wild and Scenic Rivers Program.  
[www.whiteclay.org](http://www.whiteclay.org)